



## **Support Notice**

### **DBT-120 Installation into Windows XP SP2**

**August 17, 2004**

---

This support notice applies to DBT-120 Rev B3 and later hardware versions. Earlier versions should work in a similar manner. The version of Windows XP SP2 used is Build 2049 (RC2). This notice is subject to revision once the shipping version of SP2 is released.

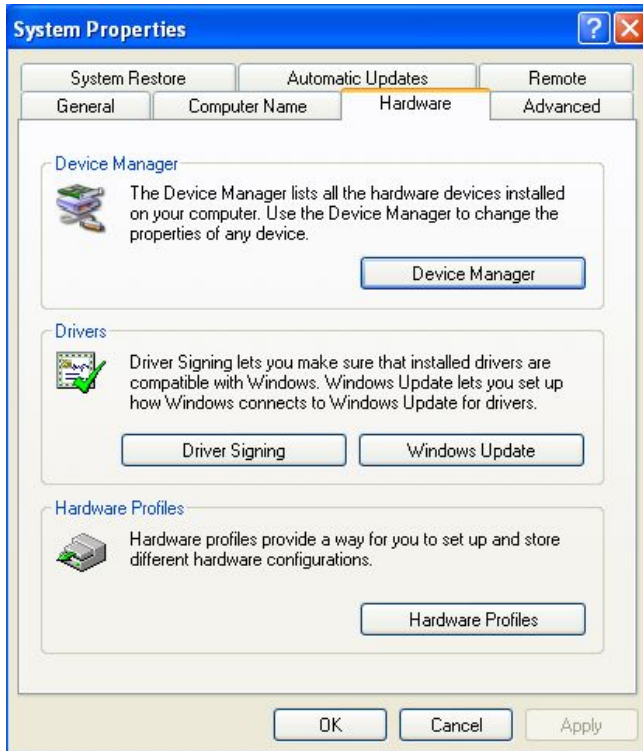
# 1 Introduction

This support note describes how to switch from the Microsoft Bluetooth driver built into Windows XP SP2 to the D-Link driver so the DBT-120 can be used with the included software.

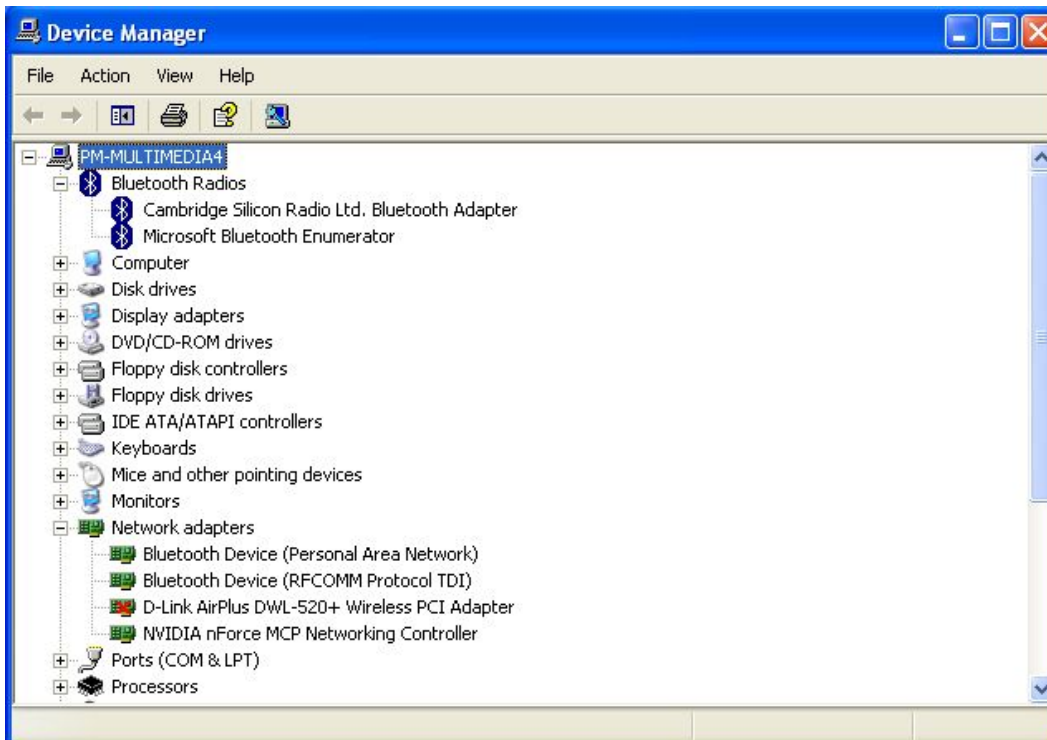
This problem occurs when a user tries to install DBT-120 software into a PC with Windows XP SP2 installed. When the user is prompted to insert the DBT-120 into the USB port during the software installation, Windows XP SP2 installs the Microsoft driver by default. The DBT-120 software will continue to complete the installation, but is not usable since the Microsoft driver is installed. The typical symptom of this problem is seeing two (2) Bluetooth icons, one colored red and the other white, in the System Tray on the Windows XP desktop.

## 2 Installing the D-Link DBT-120 Driver

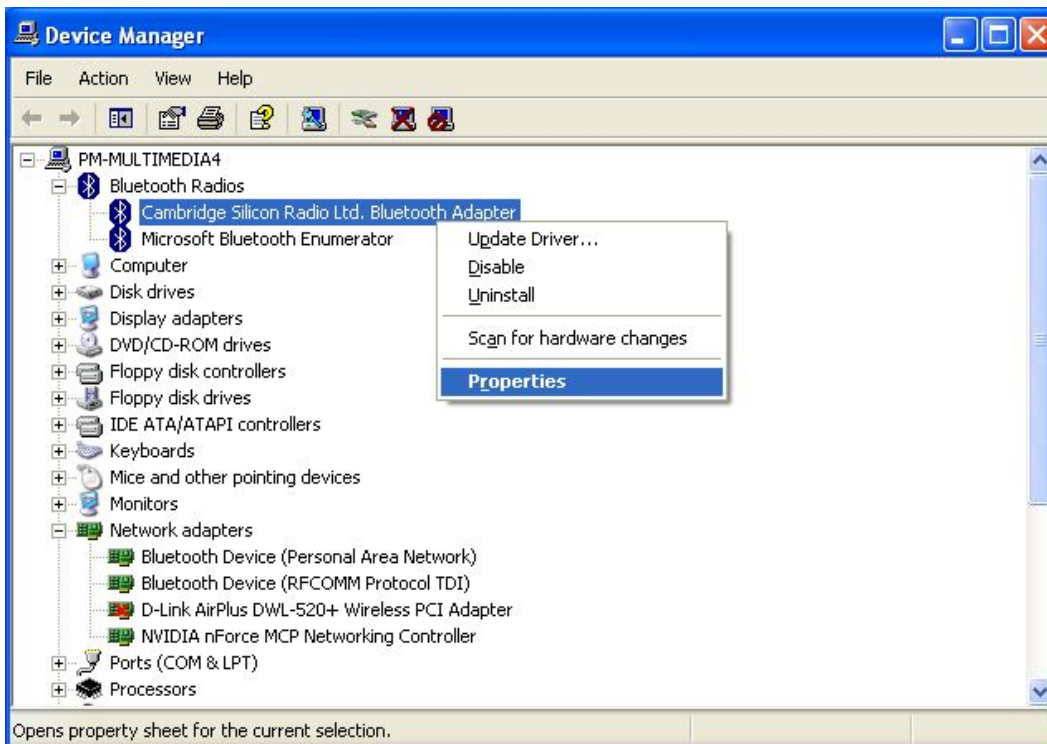
The first step after installing the DBT-120 software is to verify that the Microsoft Bluetooth driver is installed. Open up the Device Manager by right-clicking on *My Computer* icon and selecting the *Properties* menu option. Click on the *Hardware* tab and you will see the following window appear.



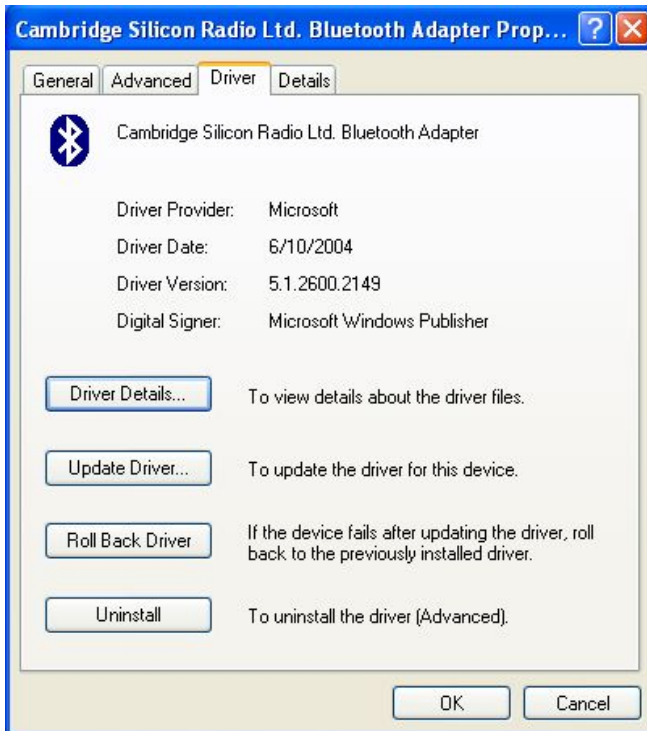
Click on the *Device Manager* button to bring up the Device Manager window. Click on *Bluetooth Radios* category listing and you will see the following screen on the next page.



You will see at least two (2) listings under the Bluetooth Radios category. One will be the Microsoft Bluetooth Enumerator and the other will be the name of the Bluetooth adapter (e.g. Cambridge Silicon Radio Ltd). Right click on the Bluetooth adapter name and select *Properties* from the menu.



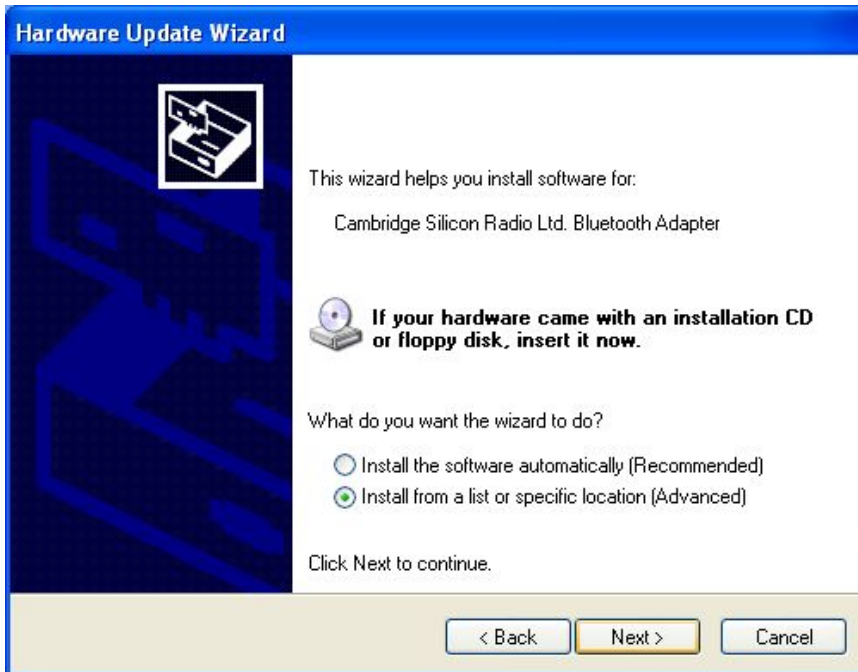
This will bring up the Properties window of the Bluetooth adapter. Click on the *Driver* tab to bring up the following window:



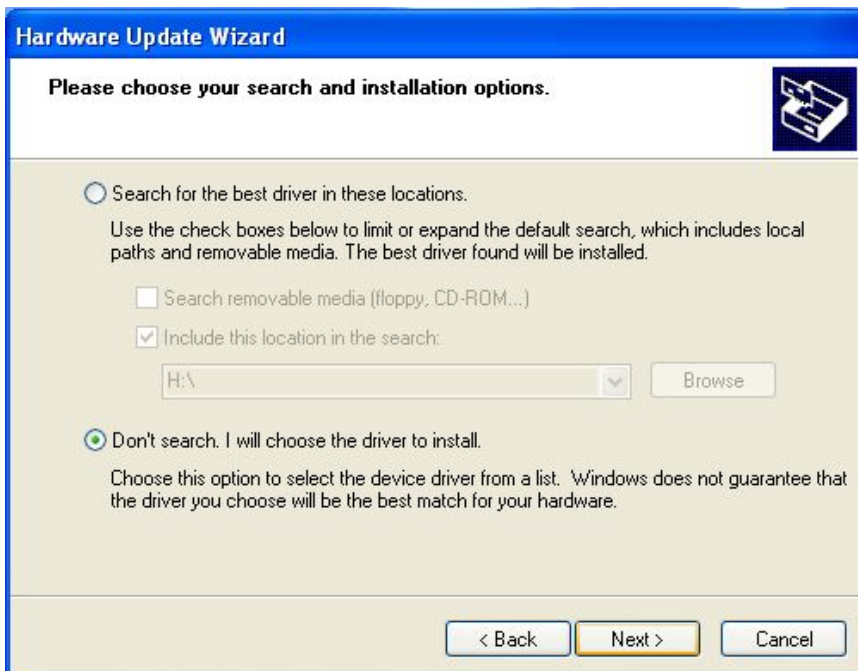
Verify that the current driver provider is Microsoft. Click on the *Update Driver* button to begin replacement with DBT-120 driver. The screen below will appear. Select the “*No, not this time*” radio button and click *Next* to proceed.



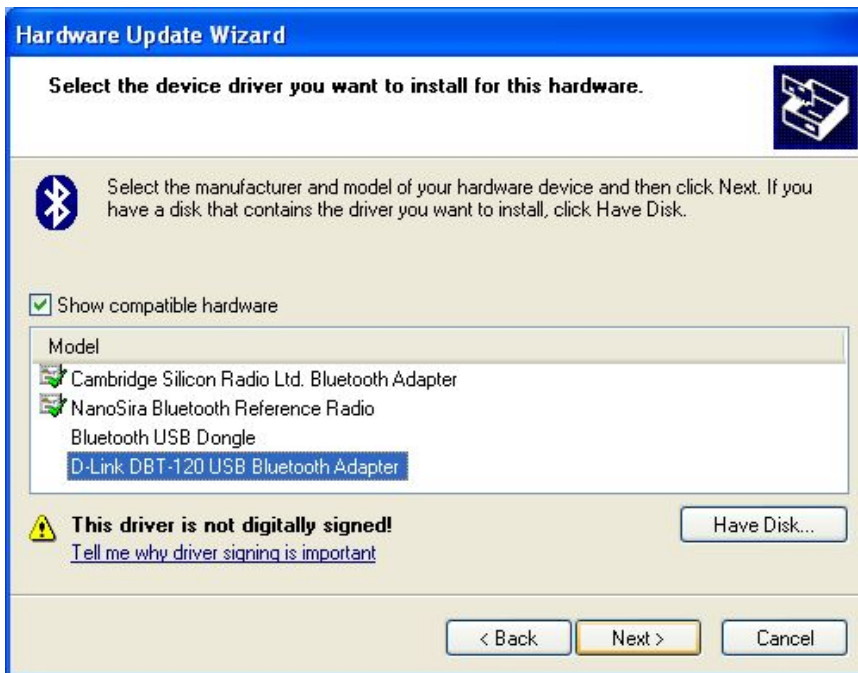
You will now see the Hardware Update Wizard window appear. Select “*Install from a list or specific location (Advanced)*” radio button and click *Next* to continue.



The following window will appear prompting you to search for the appropriate driver to install. Select the “*Don't Search. I will choose the driver to install.*” radio button. Click *Next* to continue.



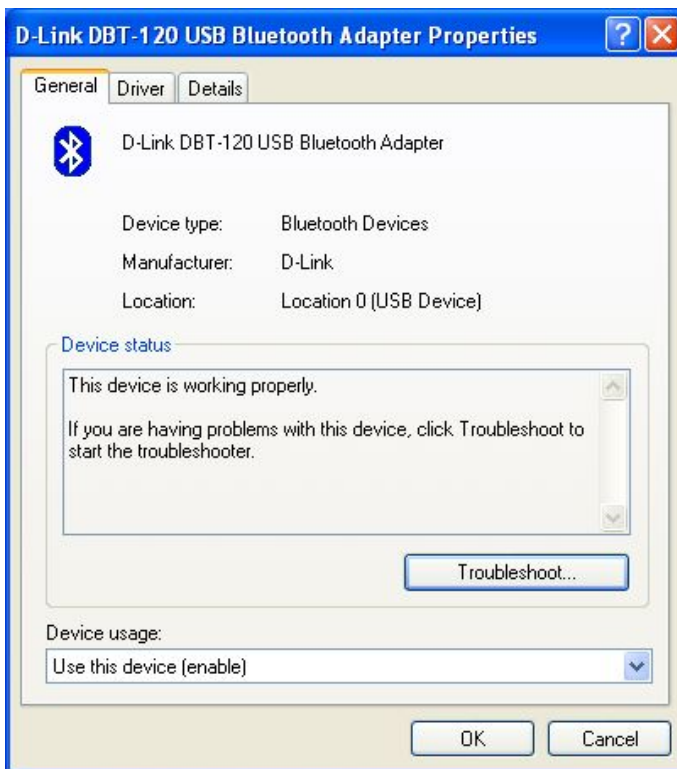
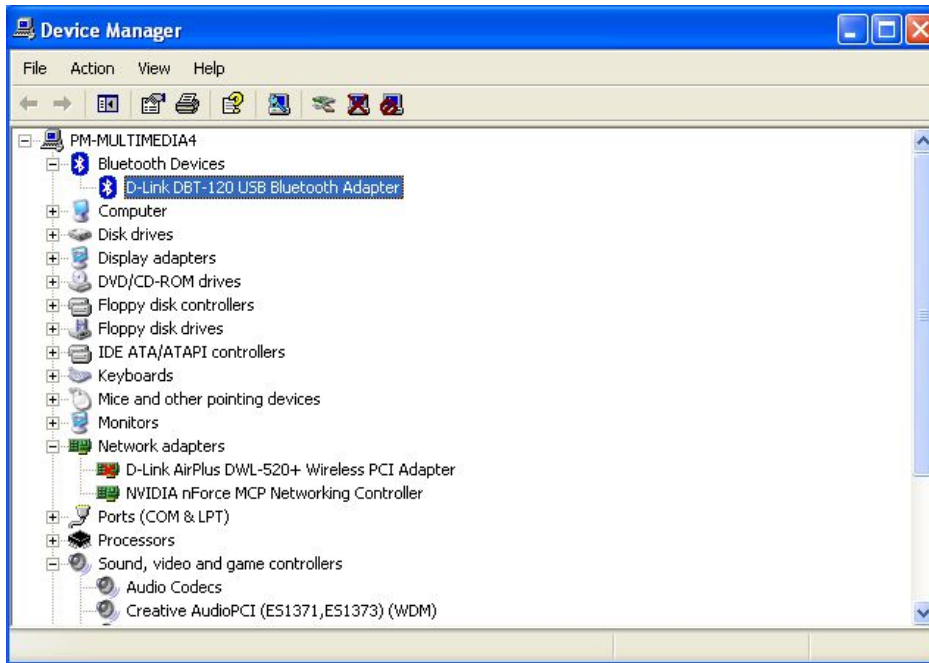
The next window you will see will show the available Bluetooth drivers to install. Click on the *D-Link DBT-120 USB Bluetooth Adapter* driver to highlight. Click *Next* to install the DBT-120 driver and complete installation.



Windows XP will display status windows as it installs the DBT-120 driver. Once this is successfully completed, you will see the following screen. Click *Finish* button to complete the installation.



Once the DBT-120 is successfully installed, verify that the correct driver is installed by going back to Device Manager and viewing the Properties. You should see the following screens.



If the above screens appear, then the DBT-120 drivers are verified and installed correctly. Your DBT-120 is ready for use with the included software.